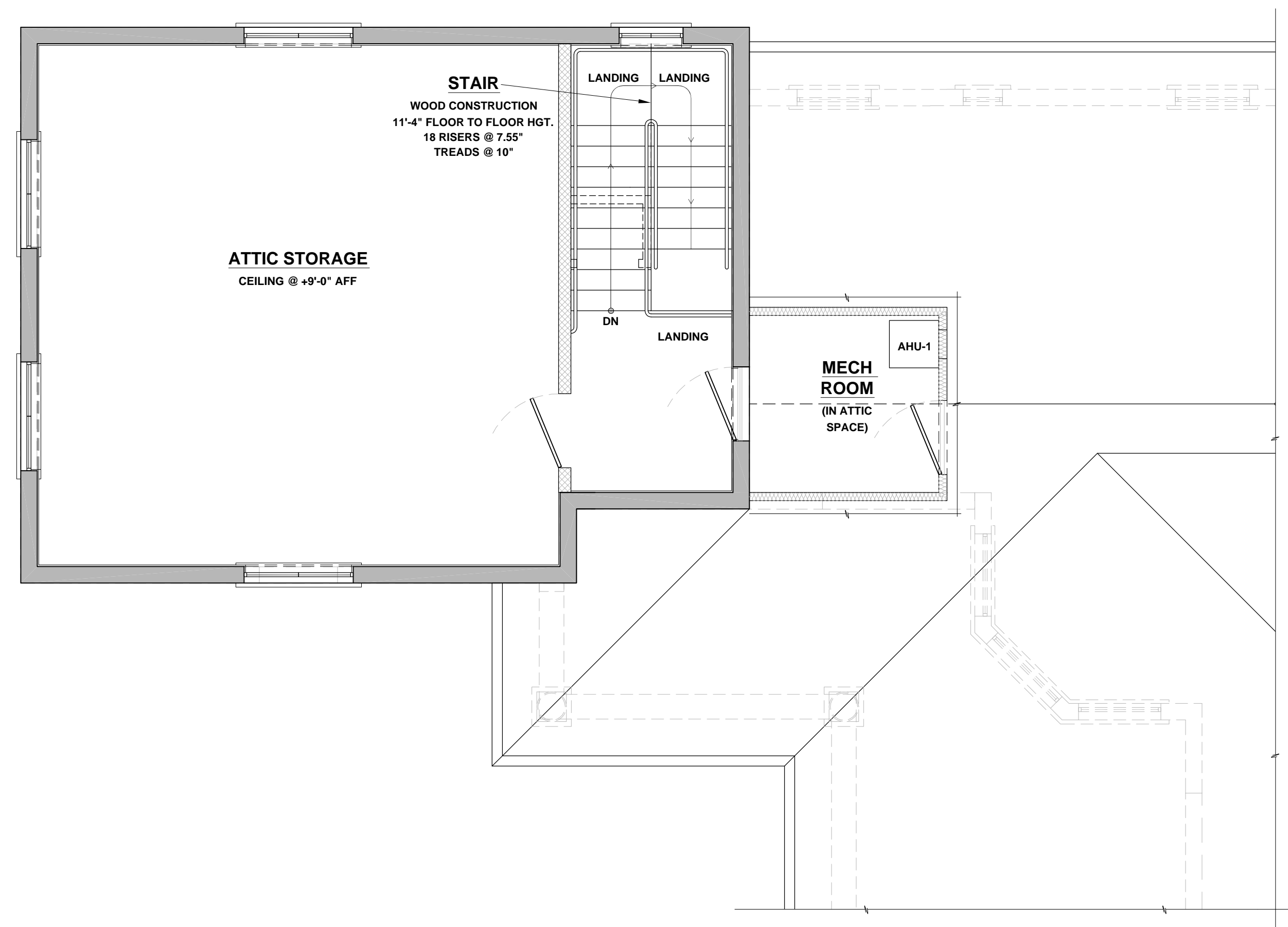


**THEODORE E. DAVIS**  
ARCHITECT AND ASSOCIATES, P.A.  
1851 West Indiantown Road - Suite 101 - Jupiter, Florida 33458  
Phone 561-744-7798 AR-4615  
Fax 561-744-5775 AAC091630

**NEW RESIDENCE FOR HAL DOBRY**  
LOT 337, GREENWAY DRIVE  
MARTINIQUE NEIGHBORHOOD, JUPITER, PALM BEACH COUNTY, FLORIDA



ATTIC STORAGE FLOOR PLAN

SCALE: 1/4"=1'-0"

REVISIONS:  
1-20-2009 ADDED (1) WINDOW (REAR FACING)  
0-15-2008 RE-SUBMITTAL SET ISSUED

DRAWN BY:  
KST  
CHECKED BY:  
TEP DAV/S  
DATE:  
0-11-2008

PROJECT NO.

2910

A-3a